

— ATLANTIC —  
**HURRICANE SEASON**  
 JUNE 1 - NOVEMBER 30



**Dear Palm Beach County Neighbors:**



We all know that hurricanes have the potential to devastate communities, and lives, which is why preparation is crucial when facing this threat. I am pleased to provide you with this Hurricane Guide to help you plan and prepare for a storm.

Proper preparation is key to help keep your family and home safe and secure during a hurricane. This guide contains detailed information on how best to prepare for a storm, emergency phone numbers, and a complete list of supplies needed for your hurricane supply kit. It is important for you and your loved ones to be informed and protected during inclement weather and this guide will help you prepare and prioritize what is important in the event of a hurricane or tropical storm. I encourage you to review all the information contained here and keep it handy for future reference.

If you need additional copies, contact my office by emailing [Clientadvocate@pbctax.com](mailto:Clientadvocate@pbctax.com). You can also download a copy by visiting [www.pbctax.com](http://www.pbctax.com).

Stay safe,

*Anne*  
 Anne M. Gannon  
 Constitutional Tax Collector

**Important Phone Numbers**

- ▶ **Emergency** ..... 911
- ▶ **Public Safety** ..... 561-712-6400
- ▶ **TDD (Hearing Impaired)** ..... 561-712-6342
- ▶ **Community Helpline** ..... 211
- ▶ **Animal Care & Control** ..... 561-233-1200
- ▶ **American Red Cross** ..... 561-833-7711
- ▶ **Code Enforcement** ..... 561-233-5500
- ▶ **Consumer Assistance Hotline** ..... 800-435-7352
- ▶ **Constitutional Tax Collector** ..... 561-355-2264
- ▶ **Engineering & Public Works** ..... 561-684-4000
- ▶ **FEMA** ..... 800-621-3362
- ▶ **Fire Rescue-Non-Emergency** ..... 561-616-7000

- ▶ **FPL Power Outage** ..... 800-468-8243
- ▶ **Health Department** ..... 561-840-4500
- ▶ **Palm Tran** ..... 561-841-4287
- ▶ **Parks & Recreation** ..... 561-966-6600
- ▶ **PBC Water Utilities** ..... 561-740-4600
- ▶ **Price Gouging** ..... 866-966-7226
- ▶ **Roads, Drainage & Traffic** ..... 561-684-4018
- ▶ **Salvation Army** ..... 561-686-3530
- ▶ **Sheriff (PBSO) –Non-Emergency** ..... 561-688-3000
- ▶ **Solid Waste Authority** ..... 561-697-2700
- ▶ **Traffic Signal Repair** ..... 561-683-6885
- ▶ **United Way** ..... 561-375-6600

**Definitions**



**TROPICAL WAVE**

An inverted trough (an elongated area of relatively low pressure) moving east to west across the tropics.



**TROPICAL DEPRESSION**

A tropical cyclonic area that has maximum sustained surface winds of 38 mph or less.



**TROPICAL STORM**

A tropical cyclone that has sustained winds of 39 - 73 mph.



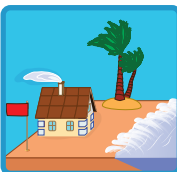
**HURRICANE WATCH**

(sustained winds of at least 74 mph) are **POSSIBLE** in the area within 48 hours.



**HURRICANE WARNING**

(sustained winds of at least 74 mph) are **EXPECTED** in the area in 36 hours or less.



**CATEGORY 1 (74-95 MPH WINDS)**

Damage primarily to shrubbery, trees, foliage and unanchored homes; no real damage to other structures; some damage to poorly constructed signs. Low-lying coastal roads inundated as water levels rise; minor pier damage; some small craft in exposed anchorage torn from moorings.



**CATEGORY 2 (96-110 MPH WINDS)**

Considerable damage to shrubbery and tree foliage; some trees blown down. Major damage to exposed mobile homes. Extensive damage to poorly constructed signs. Some damage to roofing materials of buildings; some window and door damage. No major damage to buildings. Coastal roads and low-lying escape routes inland cut off by rising water two to four hours before arrival of hurricane center. Considerable damage to piers; marinas flooded. Small craft in unprotected anchorages torn from moorings. Evacuation of some shoreline residences and low-lying areas required.



**CATEGORY 3 (111-129 MPH WINDS)**

Foliage torn from trees; large trees blown down. Many constructed signs blown down. Some damage to roofing materials of buildings; some wind and door damage. Some structural damage to small buildings. Mobile homes destroyed. Serious flooding at coast and many smaller structures near coast destroyed; larger structures near coast damaged by battering waves and floating debris. Low-lying escape routes inland cut off by rising water three to five hours before hurricane center arrives. Flat terrain five feet or less above sea level flooded inland eight miles or more possible. Evacuation of low-lying residences within several blocks of shoreline.



**CATEGORY 4 (130-156 MPH WINDS)**

Shrubs and trees blown down; all signs down. Extensive damage to roofing materials, windows and doors. Complete failures of roofs on many small residences. Complete destruction of mobile homes. Flat terrain 10 feet or less above sea level flooded inland as far as six miles. Major damage to lower floors of structures near shore due to flooding and battering by waves and floating debris. Low-lying escape routes inland cut off by rising water three to five hours before hurricane center arrives. Major erosion of beaches possible. Massive evacuation of residences near coastline, and single-story residences within two miles of coastline. Widespread power outages.



**CATEGORY 5 (157+ MPH WINDS)**

Shrubs and trees blown down; massive damage to roofs of buildings; all signs down. Very severe and extensive damage to windows and doors. Complete failure of roofs on many residences and industrial buildings. Extensive shattering of glass in windows and doors. Some complete building failures. Small buildings overturned or blown away. Complete destruction of mobile homes. Major damage to lower floors of all structures less than 15 feet above sea level within 500 yards of coastline. Low-lying escape routes inland cut off by rising water three to five hours before hurricane center arrives. Possible massive evacuation of residential areas on low ground within five to ten miles of coastline. Power outages will last for weeks, possibly months.

**Family Plans**



**MAKE A PLAN** FOR EVERY OUTCOME YOU MAY ENCOUNTER AND REVIEW WITH **YOUR FAMILY**.

- ▶ **PLAN 1:** Relocate outside the area.
- ▶ **PLAN 2:** Stay with local friends or family.
- ▶ **PLAN 3:** Stay in your home.
- ▶ **PLAN 4:** Go to a shelter.



# Preparations Before Hurricane Season



## BEFORE HURRICANE SEASON

- Begin purchasing supplies for your Family Disaster Supplies Kit.
- Inspect your window protection for rust, missing bolts, damage, etc, and repair immediately.
- Inspect your walls, windows, garage door and roof for conditions that may suffer wind damage.
- Use the Flood Zone maps on [pbcgov.org](http://pbcgov.org) to check if you are in an evacuation area.
- If you are in an evacuation area, make an evacuation plan for you and your family.
- Complete all major cutting/tree removal December through April.
- Visit [pbcgov.org/DEM](http://pbcgov.org/DEM) and sign-up for ALERT PBC text notifications.
- Download the PBC Emergency Management app "PBC DART - Disaster Awareness & Recovery Tool" on your mobile device.



## BEFORE HURRICANE SEASON

- Check your utility bills to see who provides your water, gas and electric. Write this information in the space provided below.
- Contact your city or the Solid Waste Authority of Palm Beach County to determine who picks up your trash and yard debris, and record the information below.
- Complete the assembly of your Family Disaster Supplies Kit. Purchase non-perishable foods and medicines last.
- Check with your doctor and/or pharmacy to determine how best to assure your prescriptions will last through a storm.
- If needed, register for the Special Needs Shelter, by calling 561-712-6400.
- Assess your landscaping to determine if trees need to be trimmed or ornaments removed before a storm.
- Establish a contact number with your employer to stay informed on your return to work immediately following a storm.
- Make arrangements in advance for your pets; contact Animal Care and Control about pet sheltering or ask your veterinarian.



## BEFORE HURRICANE SEASON

- Review your family plan with your family and establish who will be your out-of-town contact.
- Double-check your shelter information and confirm the location. Write this information in the space provided below.
- Visit [pbcgov.org/DEM](http://pbcgov.org/DEM) to find your closest gas station and grocery store with backup power. Write this information in the space provided below.

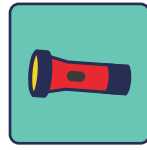
## Your Family Disaster Supplies Kit



### FOOD AND WATER

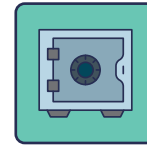
- One gallon of water per person per day for at least five days **Water for drinking, cooking and bathing will be needed; store enough for family members and pets before the storm.**
- Dry cereal
- Canned fruits
- Canned vegetables
- Canned juice
- Canned meats
- Instant coffee/tea/powdered drinks
- Jelly/jam
- Energy snacks (granola bars/raisins)
- Bread, muffins, bagels
- Crackers

Perishable items should be changed or replaced every six months.



### COMMON AND HEAVY TOOLS

- Battery-operated radio
- Crowbar
- Flashlight
- Extra batteries
- Tarpaulin, for temporary roof repair
- Assorted nails, wood screws
- Pliers, screwdriver, hammer
- Heavy cotton or hemp rope
- Non-electric can opener, utility knife
- Duct & masking tape
- Hatchet/handsaw
- Plywood & fasteners to cover windows
- Disposable dust mask
- Plastic safety goggles
- Heavy duty work gloves
- Fire extinguisher



### KEEP IN A WATERPROOF CONTAINER

- Bank account numbers
- Family records (birth, marriage, death certificates)
- Inventory of valuable household goods, important telephone numbers
- Will, insurance policies, contracts, deeds, stocks & bonds
- Credit card account numbers and companies
- Passports, Social Security cards, immunization records
- Veterinarian information
- Recent family/pet photos
- Local & state road maps
- Cash or traveler's checks, change



### FIRST-AID SUPPLIES

- Scissors
- Sunscreen
- Thermometer
- Tweezers
- Sanitary hand wipes/liquid
- Safety pins, assorted sizes
- Rolls of gauze or bandages
- Petroleum jelly
- Adhesive bandages
- Anti-diarrhea medication
- Aspirin or non-aspirin pain reliever
- Antibiotic ointment
- First aid manual
- First aid tape
- Rubbing alcohol & hydrogen peroxide
- Antiseptic spray
- Insect repellent
- Two week minimum supply of prescription medication, regularly used medical supplies and list of allergies



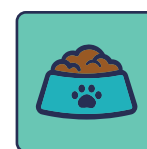
### HELPFUL SUPPLIES AND SPECIAL ITEMS

- Camping lantern with extra batteries
- Portable camp stove or grill
- Indoor/outdoor grill fuel/charcoal, lighter fluid
- Battery operated fan with extra batteries
- Phone charger
- Cooler filled with ice
- Games/activities for kids/family
- Blankets/sleeping bags
- Baby food
- Diapers
- Baby wipes
- Shampoo
- Toothpaste
- Denture care items
- Extra eyeglasses or contact lens supplies
- Feminine supplies
- Plastic storage container to hold non-drinking water
- Rain gear



### CLEANING AND STORAGE

- Chlorine bleach
- Liquid dish & hand soap
- Broom, mop and bucket
- Latex gloves
- Toilet paper, paper towels, napkins
- Plastic garbage bags, ties
- Plastic wrap
- Large plastic zip bags
- Aluminum foil
- Matches, lighters
- Plastic storage containers
- Paper plates, disposable cups & plastic utensils



### PET CARE ITEMS

- 1 gallon of water per pet & water bowl
- Pet food to last five days & food bowl
- Leash and muzzle
- A pet carrier or cage
- Proper identification/tag information
- Microchip information/vaccination records

## My Important Information

Water provider\*:

Phone #



Electric provider\*:



Gas provider\*:



Garbage and debris pick-up\*:



Phone provider:



Shelter:

Phone #



Grocery store powered by generator:



Gas station with emergency power transfer switches:



Home improvement/hardware store powered by generator:



\*Check your bill for provider